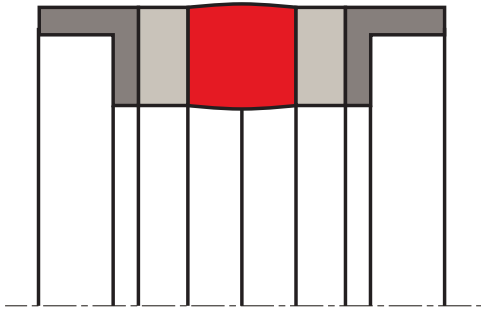


piston seal K09-SK

seal spec



description

injection moulding proses and also can be machined.

application



not bolded symbols; please consult our technical for application limitations

category of profile

machined or molded/standard/trade product.

double acting

the K09-SK seal is designed for use as a piston seal.

area of application: hydraulics

operating parameters & material

material			temperature	max. surface speed	max. pressure ¹
sealing element	back up ring	guide ring			
s-mart NBR	NBR fabric	s-mart POM ²	-30°C ... + 100°C	0.5 m/s	700 bar (70 MPa)

the stated operation conditions represent general indications. it is recommended not to use all maximum values simultaneously.
surface speed limits apply only to the presence of adequate lubrication film.

¹ pressure ratings are dependent on the size of the extrusion gap.

² POM up to ø260 mm, PA above ø260 mm

surface quality

surface Roughness	Rtmax [µm]	Ra [µm]
running surface	≤ 3.0	≤ 0.3
bottom of groove	≤ 10.0	≤ 1.8
side of groove	≤ 16	≤ 3.0

gap dimension

the largest gap dimension occurring on the non-pressurised side of the seal in operation is of vital importance for the function of the seal.

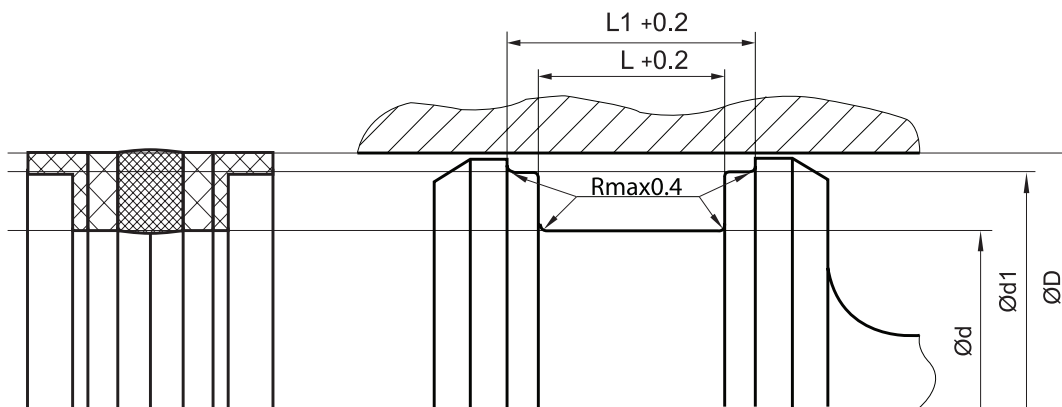
tolerance recommendation

seal housing tolerances

$\varnothing d$	h9
$\varnothing D$	H9

seal & housing recommendations

please note that we are able to produce those profiles to your specific need or any non standard housing. for detail measurements, please see seal-mart catalog...



don't hesitate to contact our technical department for further information or for special requirements (temperature, speed etc.), so that suitable materials and/or designs can be recommended.